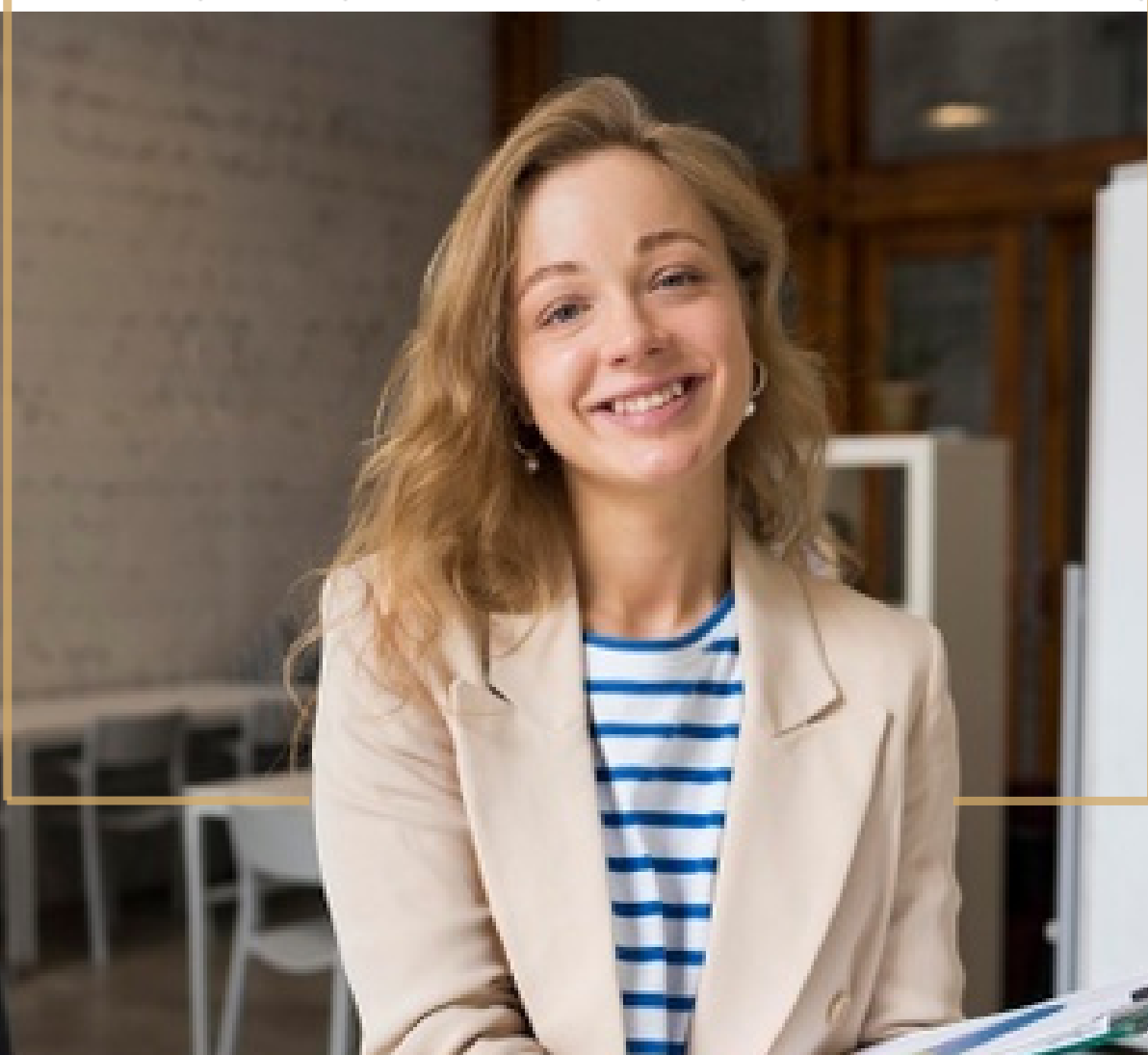




Master of Arts in Education Management and Leadership

www.eton-university.us



Proudly delivered in co-operation with
Notting Hill College

Welcome to Eton University



International Education
Inspiring Futures

Welcome to Eton University, an international institution of higher education which provides British accredited programs for both bachelor's and master's degrees.

Our globally recognised programs are designed to meet the market's ever shifting demands, fit in with today's busy lifestyles and equip current and future leaders in the fields of business and education.

We present a distinguished syllabus that can be followed in a variety of ways, as we offer distance learning as well as blended learning and classroom-based sessions in our premises throughout the year.

We strongly believe in diversity and we boast a team of academic advisers from more than ten nationalities and backgrounds to support you on your educational path. They are spread across four continents and are ready to guide you on a regular basis.

Strong partnerships are at the heart of our philosophy as we believe they boast benefits for both students and educators. Partnership allows each organization to learn from one another, raising the quality of education and facilitating access to a wider set of learning and teaching opportunities. For this purpose, Eton University has signed partnerships with reputable educational organizations such as the University of Bolton, the University of Sunderland in London, Notting Hill College as well as OTHM, ATHE and the London Graduate School.

We strive to reach ambitious students from all over the world, so we put into consideration affordability by providing payment facilities to help our students reach their goals at a time when higher education is skyrocketing out of reach of many. Reach the top with an international and unique system of education, shape an inspiring future and be a role model in your community with Eton University.





Strength in Partnership

We are proud to co-operate with Notting Hill College to deliver academic excellence with this program. The program itself is delivered through the Eton University Virtual Campus, but the tuition and academic materials are provided by Notting Hill College.

Notting Hill College is an accredited British institution established in 2004. They boast a wide range of programs and thousands of graduates from the four corners of the world. They are accredited by the British Accreditation Council (BAC) and provide a variety of teacher training and business courses some of which are awarded by TQUK and ATHE.

Their tutors are educated to the highest standard and have years of experience teaching both online and classroom-based programs.

For more information on Notting Hill College please visit
<https://www.nottinghillcollege.co.uk/>





Master of Arts in Education Management and Leadership

“Leadership and Learning are indispensable to each other”
- John F Kennedy

The principal preparation program.

Education is one of the fundamental building blocks of society. However, in an increasingly diverse and challenging world, leading an educational organisation is becoming more complex. Become a clear, confident and comprehensive educational leader with our Masters in Education Management and Leadership.

This course will develop your understanding of policy, management theory and practice in education. It gives you the opportunity to engage with the challenges facing professionals and policy makers in your own country. It will provide knowledge that underpins the ability to work as an effective manager in the education sector. Through combining both theoretical and practical knowledge in the education profession you will develop and enhance knowledge and skills in the areas of leading change, effective performance and team leadership.

Our program is delivered in two stages and graduates will receive an accredited certificate at the end of each stage. The first stage is awarded by OTHM and the second stage is awarded by the University of Chichester (through the London Graduate School).



Why Choose Our Program?

REASONS



1. The program is fully accredited by Ofqual - a non-ministerial government department that regulates qualifications, exams and tests in England
2. It is recognised internationally
3. We offer two flexible pathways of studying: Hybrid Learning and blended learning on the Virtual Campus
4. We are competitive on fees and offer flexible payment plans.
A similar qualification could cost you tens of thousands
5. You have the opportunity to finish early and receive a smaller qualification, or take a break and return to your studies later
6. There is an opportunity to study part of the course in the UK
7. We have a multi-model Virtual Campus which caters to all online student needs
8. Take the opportunity to study with British teachers, and receive world-renowned education
9. No IELTS certificate required
10. We have office and staff located around the world who are ready to assist you at any stage during your studies

Level 7 Diploma in Education Management and Leadership

Quick Facts

- 120 Credits
- Modules = six
- Duration = two quarters
- Mode of study = distance learning, Virtual Campus or physical campus
- Awarding body = OTHM
- Accredited by = Ofqual



Quarter One Modules

- 1- Contemporary Issues in Education: Theory, Policy and Practice
- 2- The Management of Educational Change
- 3- Managing Effective Intercultural Communication and Perspectives

Quarter Two Modules

- 4- Pedagogy and Practice in Education
- 5- Leading Reflective Practice in Education
- 6- Research Methods in Education

Eligibility

To be eligible for this stage, applicants must;

- Posses an honours degree in related subject or UK level 6 diploma or an equivalent overseas qualification;
- Be 21 years +
- Be mature learners with relevant management experience
- If you are not from a majority English-speaking country must provide evidence of English language competency

Assessment

Each Module consists of 3-5 written assignments which can include case studies, research reports and presentations.

How will you study?

Hybrid Learning

For the self-motivated learner who wants total control over their schedule. This mode of study offers the same course content and access to the learning management system, the only difference is you can choose what you study, when! You will also receive 12 hours of one-to-one tuition with a tutor provided by Notting Hill College. This mode of study is perfect if you have begun your career and are looking to take the next step, or you're a school leaver wanting to study a qualification alongside getting that all-important work experience.



Virtual Campus

Your classroom. Your library. Your management system.

Enrol on our comprehensive Virtual Campus and you will be invited to attend weekly sessions with expert teachers and work collaboratively with your fellow peers. This is a great opportunity to network and meet people from different cultures and backgrounds. You'll delve into the course materials and take part in interesting discussions relating to your course topics. This mode of study will enrich your studies and help you keep on track. You'll be able to ask questions, get access to additional resources and take part in interactive quizzes.

After the class has finished, you'll be able to access all the materials including a recording of the session.

Master of Arts in Education Management and Leadership (top-up)

Quick Facts

- 60 Credits Modules = one consultancy report
- Duration = up to six months
- Mode of study = distance learning
- Awarding body = University of Chichester
- Accredited by = Ofqual

The top-up programmes consist of a compulsory single module 'Consultancy Project Report' worth 60 credits. The module provides the opportunity for you to examine an area of particular interest within an appropriate organisational context. The module is designed to make a major contribution to your professional and intellectual development, through enabling you to demonstrate your capacity for sustained independent thought, learning and critical reflection.

The purpose of this programme is to deliver a practical and realistic solution to a business-related strategic challenge, which in turn is supported by appropriate reference to theoretical and conceptual analysis. You will evidence this by producing a 'Consultancy Project Report' of 12,000 words.

Eligibility

To be eligible for this stage, applicants must;

- Successfully complete stage one - Level 7 Diploma in Education Management and Leadership
- you must also have a minimum of 2 years' work experience at graduate level, in either a managerial or professional capacity which may include voluntary work, placements, internships, project management etc.



How will you study?

The Consultancy Project Report is delivered and assessed by the London Graduate School's UK based academic team using their virtual learning platform and direct support from your allocated supervisor.

The Consultancy Project module could be completed in one academic term of 15 weeks or may be studied part-time over two terms.



LONDON
GRADUATE SCHOOL

Become a clear, confident and comprehensive educational leader with our Master of Arts in Education Management and Leadership program.



Contact us

We have several offices located around the world with staff who are ready to support and advise you. Book a meeting with one of our advisors today.

We look forward to meeting you.

Eton University USA

Address: 831 N Tatnall Street,
Suite M #175, Wilmington, DE
19801, United States of America

Tel: +1302-219-5630

WhatsApp: +44 7398 392929

Email: education@eton-university.us

Eton University UK

Address: 19 Waters Edge Business
Park, Modwen Road, Salford, Greater
Manchester, United Kingdom

Tel: +44 161-877-1316

Email: gabrielle.hargreaves@eton-academy.uk

Eton University Turkey

Ofis Lamartine, floor 6, Kocatepe neighbourhood, Lamartin
Avenue, 34437 Taksim - Beyoglu. Istanbul- Turkey.

Tel: +90-552-755-4788 or +90 212-924-70-98

Email: info.tr@nottinghillcollege.net

<https://www.eton-university.us/>